



REV. MARTIN T. CIOPPI
Memorial Fund



The Reverend Martin T. Cioppi Memorial Fund

Shortly before his passing in June 2023 he sent out the first issue of The Providence. He intended this to be a periodic publication used to discuss his vision for our parish. The first topic he wrote about was the restoration of the sacred space of the sanctuary. His vision was to elevate the sense of beauty and nobility of our sanctuary. It was his vision to restore the clean lines of the original architecture, not in an attempt to create something that is not there, but rather to return to what was originally intended.

A key element of the restoration of sacred space included the procurement of the Nakashima Sanctuary Furniture Collection that was used exclusively in Saint Charles Borromeo seminary's Immaculate Conception Chapel which closed earlier this year. Father Cioppi believed that furniture would help restore a noble simplicity inherent in the structure of our sanctuary.

Never one to miss an opportunity, he acquired all 14 pieces of the collection. This suite of sanctuary furniture includes handmade pieces that are one-of-a-kind and cannot be reproduced.

If you knew anything about Fr. Cioppi, you knew that he had a passion for life. He never did anything half-way. He enjoyed what he did and always welcomed you to join him in pursuing his passions. You may have recognized one or more of these passions in his well-lived life:

- He had a deep appreciation for the beauty found in all forms of art. Whether it was enjoying classical music or discussing Monet's water lilies.
- He was a connoisseur of fine wines – the wines found in the 'special reserve' section at Total Wines
- He loved a good game of bingo (or any game of Bingo)
- He never missed an MDP family celebration, making sure we were all welcomed as part of his family and,
- He had a passion for the sacred liturgy.

The purchase of this collection was funded through short-term borrowings. Father Cioppi counted on the generosity of his MDP family (you, me and everyone connected to our parish) to help recover the cost of this furniture acquisition.

Today we are launching the Rev. Martin T. Cioppi Memorial Fund. The objective of the fund is to secure contributions that will be applied towards the cost incurred in obtaining the Nakashima collection.

We are asking every MDP family to consider making a donation to the fund. Your donation may be designated toward the acquisition of one of the 14 individual pieces of furniture. Donors to the fund will be recognized at the following contribution levels:

Donation Recognition Levels	Donation Amount
Good Shepherd	\$1,500 and above
Holy Pastor	\$500 - \$1,499
Faithful Follower	\$250 - \$499
General Benefactor	Amounts up to \$249

Of course every donation, no matter how large or small, will bring us closer to completing the first step of Father Cioppi’s vision to restore the sanctuary.

The following pages show pictures of each furniture piece and describes the composition, use and significance of each. On the last page there is a form for making your donation. All of the pieces of the furniture collection are on display in McGrory Hall.

Please help us honor Father Cioppi by making a contribution to the Reverend Martin T. Cioppi Memorial Fund.

May God bless you and thank you for your generosity.

Introducing

THE NAKASHIMA SANCTUARY FURNITURE COLLECTION

Mother of Divine Providence is honored to become the owner and custodian of a collection of sanctuary furniture made by the master woodworker, George Nakashima. Fifty years ago he created these pieces to honor God in the Sacrifice of the Mass at Saint Charles Borromeo Seminary's Immaculate Conception Chapel.

Upon its closing and impending relocation in Lower Gwynedd, we were offered the opportunity to purchase the complete sanctuary furniture collection.

“These pieces, which are blessed, are simple but noble in the Spirit of the Second Vatican Council.”

Rev. Martin T. Cioppi

In keeping with the archetypal style of our Church (mid-century modern) this furniture collection will be a perfect addition in making our Sanctuary an authentic and organic representation of the beauty of our faith and of the wonders of God's Creation.

This suite of sanctuary furniture includes handmade pieces that are one-of-a-kind and cannot be reproduced. Reflecting the unique character of each piece, Christie's of New York has appraised the collection at \$125,000 with individual pieces ranging between \$2,000 and \$15,000.

Mother of Divine Providence is inviting its parishioners, benefactors and friends to donate a portion of the cost of these pieces to the parish in memory of our pastor, Rev. Martin T. Cioppi. Those making a donation toward the cost of a piece of sanctuary furniture will be recognized on a permanent memorial plaque to be prominently displayed in the vestibule of the church.

We want to make this donation opportunity available to everyone. Therefore, donations for some of the more expensive pieces will be split among multiple donors. All donors contributing to a multi-donor piece of Nakashima furniture will be recognized on the memorial plaque.

We also invite individuals or groups of people to make a financial contribution to the Fr. Cioppi Memorial Fund. Those contributing at least \$250 will also be recognized on the memorial plaque.

We thank you for your financial and prayerful support of our parish.



Who Was GEORGE NAKASHIMA

(MAY 24, 1905 – JUNE 15, 1990)

George Nakashima was an American woodworker, architect and furniture maker who was one of the leading innovators of 20th century furniture design and a father of the American Craft movement. In 1983, he accepted the Order of the Sacred Treasure, an honor bestowed by the Emperor of Japan and the Japanese government.

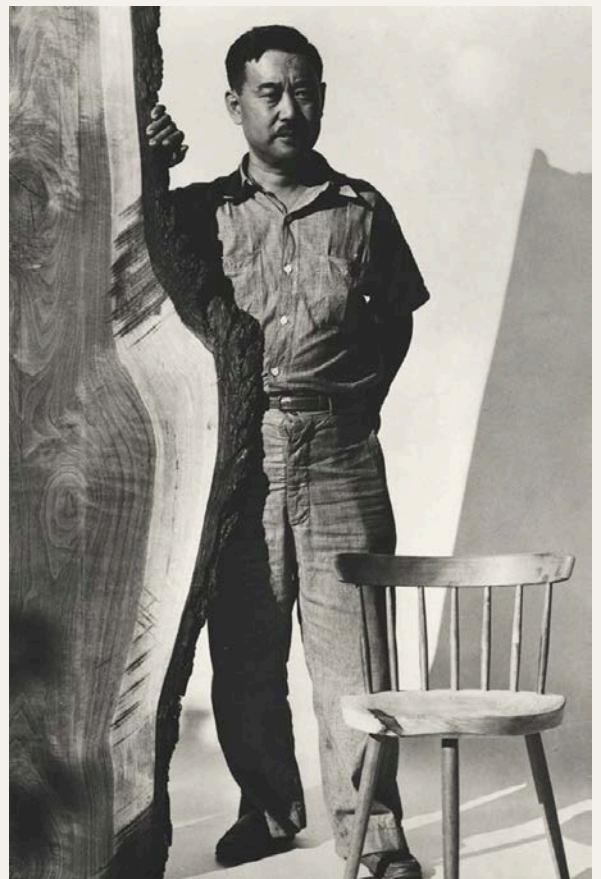
An article in *Architectural Digest*, October 14, 2020, titled “A Look into George Nakashima’s Instinctual woodworking,” noted the following:

“While interned in Idaho at Camp Minidoka during World War II, Japanese-American architect George Nakashima met master Japanese carpenter Gentaro Hikogawa. Using wood scraps and desert plants, they worked together to improve their stark living conditions. Nakashima, who had studied architecture at MIT and worked for Czech-American architect Antonin Raymond, also learned some traditional Japanese techniques, such as selecting timber.”

“He learned to improvise, you couldn’t draw something and then go buy materials. It was the other way around; the material came first.”

**Mira Nakashima,
George’s Daughter**

That resourcefulness laid the groundwork for a prolific practice in New Hope, Pennsylvania. Working first with scrap wood and then with offcuts from a local lumberyard, Nakashima developed a style that celebrated nature’s imperfections.”



George Nakashima is perhaps best known for developing the butterfly joint. This construction method involves connecting two wooden pieces with a third piece of wood shaped like a butterfly. The joint forms a strong, sturdy connection and stabilizes pieces to fight the effects of wood expansion.

The Nakashima Sanctuary Furniture Collection

<u>Collection Piece #</u>	<u>Sanctuary Piece</u>
1	Processional Cross
2	Processional Cross Stand (2 pieces)
3	Lectern/Ambo
4	Credence Table
5	Gift Table
6	Altar Candle Stands (set of 2)
7	Presidential Chair
8	Concelebrants Chair (1)
9	Concelebrants Chair (2)
10	Concelebrants Bench (1)
11	Concelebrants Bench (2)
12	Sanctuary Stools Pair
13	Sanctuary Stool Single
14	Paschal Candle Stand

#1

Processional Cross



Wood: English Oak and
Boxwood

Corpus: Hand carved by
Santiago Rivas

The crucifix is a sign in the midst of the eucharistic assembly proclaiming that the Mass is the same Sacrifice as Calvary.

#2

Processional Cross Stand



Wood: English Oak and
Boxwood

These stands, made to complement the Processional Cross, are moveable, allowing the Cross to be positioned as required by the liturgy being celebrated or as stored in the Sacristy.

#3

Lectern/Ambo



Wood: Walnut

Reserved for the proclamation of the word of God, the Lectern / Ambo is designed to harmonize with, but never overshadow, the altar.

#4

Credence Table



Wood: Walnut

The credence table plays a prominent and practical role in the celebration of the liturgy. On it are placed the sacred vessels, cruets, the missal on its stand and other liturgical objects to be used during the celebration.

#5

Gift Table



Wood: Walnut

This table holds the gifts which will become Christ's Body and Blood during the prayers of consecration. The gifts are presented to the celebrant by the faithful.

#6

Altar Candle Stand (set of 2)



Wood: Walnut

These stands, resting at the foot of the altar, hold the candles that make known the light of Christ in our celebrations.

#7



Presidential chair

Wood: Walnut

The priest's chair should be chosen to harmonize with the style of the other furniture in the sanctuary. Taking into account the size of the church, the chair should be arranged so that the priest presides without dominating. It must not resemble a throne but should allow the priest to be comfortable while sitting in it.

#8



Concelebrant's Chair (1)

Wood: Walnut

These chairs are designed to complement the Presidential Chair in form and fashion. They are characterized by having a shorter back which distinguishes the role of the concelebrant from that of the principal celebrant.

#9

Concelebrant's Chair (2)

Wood: Walnut

These chairs are designed to complement the Presidential Chair in form and fashion. They are characterized by having a shorter back which distinguishes the role of the concelebrant from that of the principal celebrant.



#10

Concelebrant's Bench (1)

Wood: Walnut

Designed for celebrations at which many ministers of the altar are in attendance, each bench will comfortably accommodate 6-8 ministers.





#11

Concelebrant's Bench (2)

Wood: Walnut

Designed for celebrations at which many ministers of the altar are in attendance, each bench will comfortably accommodate 6-8 ministers.



#12

Set of Two Sanctuary Stools

Wood: Walnut

The sanctuary stools are available to fill a variety of needs. Used principally by ministers at the altar (altar servers, instituted lectors and acolytes, and the psalmist) they are easily moved to accommodate the needs of each particular celebration.

#13

Single Sanctuary Stool



Wood: Walnut

The sanctuary stools are available to fill a variety of needs. Used principally by ministers at the altar (altar servers, instituted lectors and acolytes, and the psalmist) they are easily moved to accommodate the needs of each particular celebration.

#14

Paschal Candle Stand



Wood: Walnut

This stand holds the Easter candle. It will be located in the sanctuary from the Easter Vigil through the Easter season. Outside of the Easter Season the candle will reside in the baptistry.

The Nakashima Sanctuary Furniture Collection

(As Appraised by Christie's of New York)

<u>Collection Piece #</u>	<u>Sanctuary Piece</u>	<u>Appraised Value</u>
1	Processional Cross	\$4,000
2	Processional Cross Stand (2 pieces)	\$6,000
3	Lectern/Ambo	\$9,500
4	Credence Table	\$7,000
5	Gift Table	\$4,000
6	Altar Candle Stands (set of 2)	\$10,000
7	Presidential Chair	\$6,000
8	Concelebrants Chair (1)	\$6,000
9	Concelebrants Chair (2)	\$6,000
10	Concelebrants Bench (1)	\$12,500
11	Concelebrants Bench (2)	\$12,500
12	Sanctuary Stools Pair	\$10,000
13	Sanctuary Stool Single	\$5,000
14	Paschal Candle Stand	\$2,500